



NATA LIGHTING CO.,LTD.
www.nata.cn
Email:info@nata.com
Tel:+86-750-3770000 Fax:+86-750-3771111
Address:380JinOu Road,GaoXin Zone,Jiang Men City,Guangdong,China

NT

Client:

LumCAT: 3-2834-L

Luminaire: 92.70.411.00

Report No: 2024408-B024

Ballast type: AC

Test No: 2024408-C024

Voltage(V): 34.920

LampCAT: Fortimo_SLM_C_1205

Current(A): 0.401

Lamp flux(lm): 2378.0

Power (W): 14.002

Number of Lamps: 1

PF: 0.000

Length(mm): 0

Width(mm): 0

Phm Type: C

Height(mm): 0

Photometric Results

Lumens(lm): 2028.99, Efficiency(%): 85.32% , Luminous Efficacy(lm/W): 144.91

Central intensity(cd): 4731.164, Maximum intensity(cd): 4731.164

Angle of maximum intensity: C=0.0 γ =0.0

Beam Angle(50%Imax): [C0/180]Total=35.0

[C90/270]Total=35.0

Field angle(10%Imax): [C0/180]Total=65.0

[C90/270]Total=65.0

Maximum s/h(1/2): C0_180=0.58 C90_270=0.58

Maximum s/h(1/4): C0_180=0.58 C90_270=0.58

Up flux rate of lamp(%): 0.00%

Down flux rate of lamp(%): 85.32%

Up flux rate of LUM(%): - -

Down flux rate of LUM(%): 100.00%

CIE Type : Direct lighting

Output flux ratio in π solid angle : 97.937%

Equipment: GMS1980
Temperature(°C): 25.0

Date: 2024/4/08
Humidity(%): 60.0%

Operator: NT07
Distance(m): 7.65

$\gamma(^{\circ})$	Average I(cd)	Zonal F(lm)	Sum F(lm)	Eff Flux(%)	Eff Sum(%)
0.0	4731.164	0.000	0	0.00%	0.00%
1.0	4721.069	4.523	4.523	0.19%	0.22%
2.0	4693.270	13.512	18.035	0.57%	0.89%
3.0	4655.889	22.360	40.395	0.94%	1.99%
4.0	4604.609	30.998	71.393	1.30%	3.52%
5.0	4540.673	39.343	110.736	1.65%	5.46%
6.0	4468.471	47.345	158.081	1.99%	7.79%
7.0	4376.517	54.901	212.982	2.31%	10.50%
8.0	4261.228	61.819	274.8	2.60%	13.54%
9.0	4116.239	67.895	342.695	2.86%	16.89%
10.0	3956.033	73.051	415.746	3.07%	20.49%
11.0	3763.714	77.136	492.882	3.24%	24.29%
12.0	3568.761	80.154	573.037	3.37%	28.24%
13.0	3336.573	81.949	654.986	3.45%	32.28%
14.0	3117.772	82.615	737.601	3.47%	36.35%
15.0	2905.115	82.685	820.286	3.48%	40.43%
16.0	2681.925	81.866	902.152	3.44%	44.46%
17.0	2467.001	80.183	982.334	3.37%	48.42%
18.0	2246.298	77.712	1060.046	3.27%	52.25%
19.0	2061.002	74.938	1134.984	3.15%	55.94%
20.0	1862.830	71.817	1206.801	3.02%	59.48%
21.0	1694.285	68.304	1275.105	2.87%	62.84%
22.0	1514.584	64.484	1339.589	2.71%	66.02%
23.0	1342.967	59.959	1399.548	2.52%	68.98%
24.0	1239.455	56.461	1456.009	2.37%	71.76%
25.0	1155.688	54.460	1510.469	2.29%	74.44%
26.0	1049.711	52.059	1562.528	2.19%	77.01%
27.0	955.336	49.054	1611.582	2.06%	79.43%
28.0	875.533	46.354	1657.936	1.95%	81.71%
29.0	798.364	43.794	1701.73	1.84%	83.87%
30.0	714.187	40.839	1742.568	1.72%	85.88%
31.0	622.504	37.198	1779.766	1.56%	87.72%
32.0	526.388	32.914	1812.681	1.38%	89.34%
33.0	424.632	28.017	1840.698	1.18%	90.72%
34.0	325.634	22.705	1863.403	0.95%	91.84%
35.0	253.622	17.990	1881.393	0.76%	92.73%
36.0	192.283	14.198	1895.591	0.60%	93.43%
37.0	144.770	10.993	1906.583	0.46%	93.97%

$\gamma(^{\circ})$	Average I(cd)	Zonal F(lm)	Sum F(lm)	Eff Flux(%)	Eff Sum(%)
38.0	83.278	7.612	1914.195	0.32%	94.34%
39.0	73.512	5.352	1919.547	0.23%	94.61%
40.0	66.899	4.897	1924.444	0.21%	94.85%
41.0	61.683	4.579	1929.023	0.19%	95.07%
42.0	56.994	4.312	1933.334	0.18%	95.29%
43.0	53.080	4.077	1937.412	0.17%	95.49%
44.0	49.503	3.872	1941.284	0.16%	95.68%
45.0	46.533	3.691	1944.974	0.16%	95.86%
46.0	43.819	3.533	1948.508	0.15%	96.03%
47.0	41.310	3.386	1951.894	0.14%	96.20%
48.0	39.225	3.256	1955.149	0.14%	96.36%
49.0	37.389	3.146	1958.295	0.13%	96.52%
50.0	35.611	3.044	1961.339	0.13%	96.67%
51.0	34.038	2.947	1964.286	0.12%	96.81%
52.0	32.546	2.857	1967.143	0.12%	96.95%
53.0	31.236	2.775	1969.917	0.12%	97.09%
54.0	29.942	2.696	1972.614	0.11%	97.22%
55.0	28.749	2.620	1975.234	0.11%	97.35%
56.0	27.476	2.541	1977.774	0.11%	97.48%
57.0	26.299	2.459	1980.233	0.10%	97.60%
58.0	25.165	2.380	1982.613	0.10%	97.71%
59.0	23.936	2.295	1984.908	0.10%	97.83%
60.0	22.831	2.209	1987.118	0.09%	97.94%
61.0	21.726	2.126	1989.244	0.09%	98.04%
62.0	20.775	2.048	1991.292	0.09%	98.14%
63.0	19.803	1.974	1993.266	0.08%	98.24%
64.0	18.903	1.899	1995.165	0.08%	98.33%
65.0	18.127	1.833	1996.998	0.08%	98.42%
66.0	17.374	1.771	1998.769	0.07%	98.51%
67.0	16.672	1.712	2000.481	0.07%	98.60%
68.0	16.013	1.656	2002.136	0.07%	98.68%
69.0	15.428	1.604	2003.74	0.07%	98.76%
70.0	14.835	1.554	2005.295	0.07%	98.83%
71.0	14.294	1.506	2006.8	0.06%	98.91%
72.0	13.745	1.458	2008.258	0.06%	98.98%
73.0	13.248	1.412	2009.67	0.06%	99.05%
74.0	12.824	1.371	2011.04	0.06%	99.12%
75.0	12.378	1.332	2012.372	0.06%	99.18%

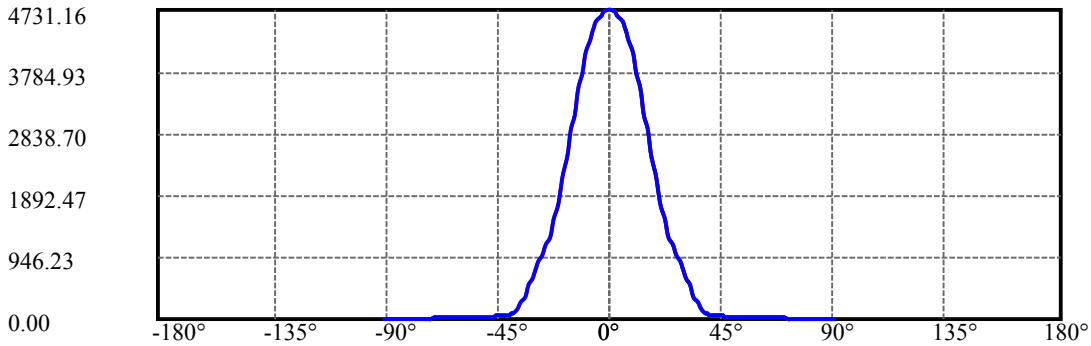
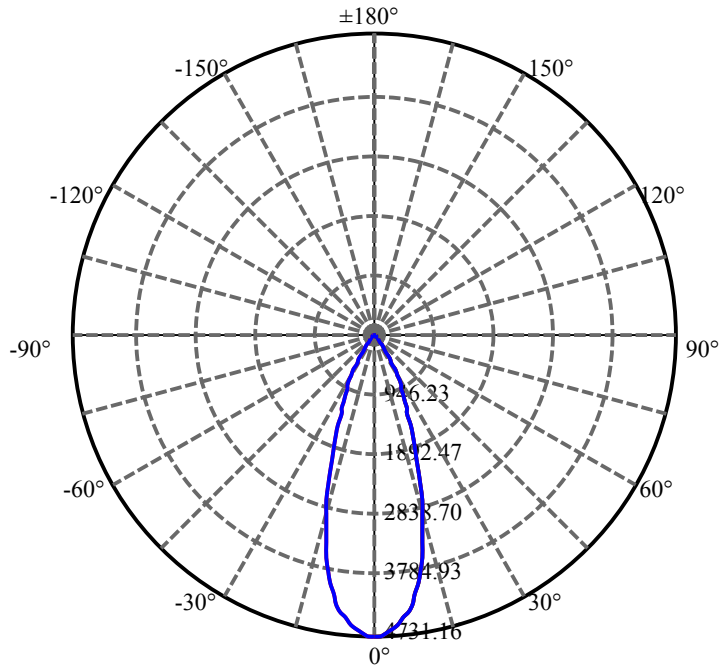
$\gamma(^{\circ})$	Average I(cd)	Zonal F(lm)	Sum F(lm)	Eff Flux(%)	Eff Sum(%)
76.0	12.012	1.295	2013.667	0.05%	99.25%
77.0	11.661	1.262	2014.929	0.05%	99.31%
78.0	11.339	1.231	2016.16	0.05%	99.37%
79.0	11.039	1.202	2017.362	0.05%	99.43%
80.0	10.761	1.175	2018.538	0.05%	99.49%
81.0	10.483	1.149	2019.686	0.05%	99.54%
82.0	10.190	1.121	2020.807	0.05%	99.60%
83.0	9.949	1.095	2021.902	0.05%	99.65%
84.0	9.722	1.072	2022.974	0.05%	99.70%
85.0	9.532	1.051	2024.025	0.04%	99.76%
86.0	9.305	1.030	2025.054	0.04%	99.81%
87.0	9.108	1.008	2026.062	0.04%	99.86%
88.0	8.947	0.989	2027.051	0.04%	99.90%
89.0	8.793	0.972	2028.023	0.04%	99.95%
90.0	8.749	0.962	2028.985	0.04%	100.00%

ZONAL LUMEN SUMMARY

Zone	Lumens	%Lamp	%Fixt
0-30	1742.57	73.28%	85.88%
0-40	1924.44	80.93%	94.85%
0-60	1987.12	83.56%	97.94%
0-90	2028.02	85.28%	99.95%
0-120	2028.02	85.28%	99.95%
0-180	2028.99	85.32%	100.00%
60-90	40.91	1.72%	2.02%
90-120	0.00	0.00%	0.00%
90-130	0.00	0.00%	0.00%
90-150	0.00	0.00%	0.00%
90-180	0.00	0.00%	0.00%
0-27.25	1623.19	68.26%	80.00%

ZONAL LUMEN SUMMARY

0-10	415.75
10-20	791.06
20-30	535.77
30-40	181.88
40-50	36.89
50-60	25.78
60-70	18.18
70-80	13.24
80-90	9.49
90-100	0.00
100-110	0.00
110-120	0.00
120-130	0.00
130-140	0.00
140-150	0.00
150-160	0.00
160-170	0.00
170-180	0.00



C0(Max): ———

C0/C180: ———

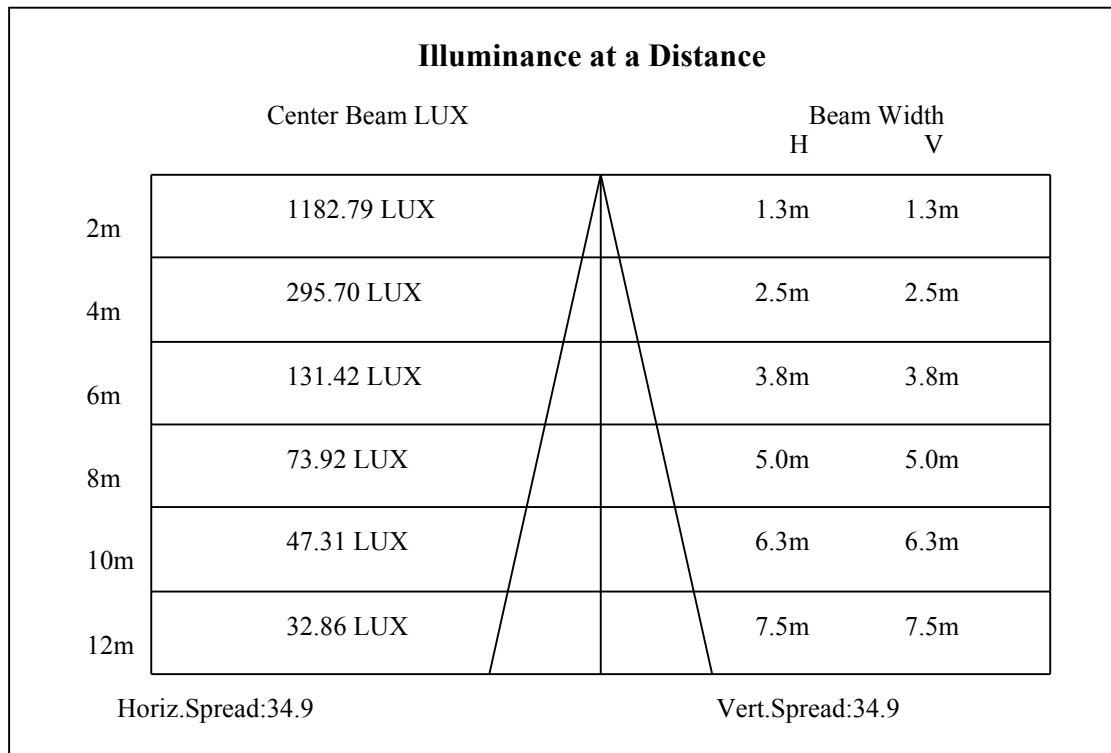
C90/C270: ———

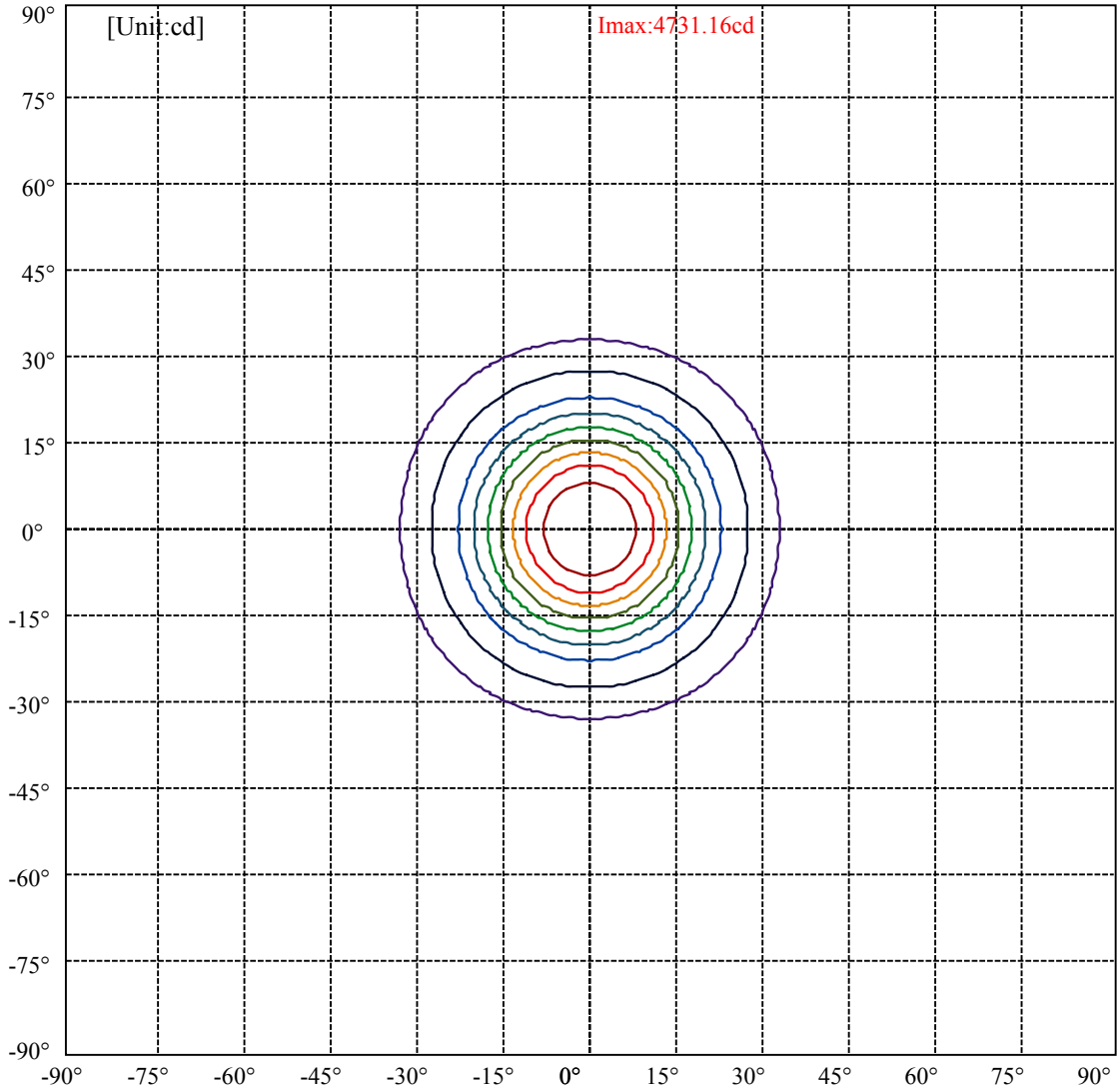
Field angle(10%Imax):C0/180Left:32.5 Right:32.5

:C90/270Left:32.5 Right:32.5

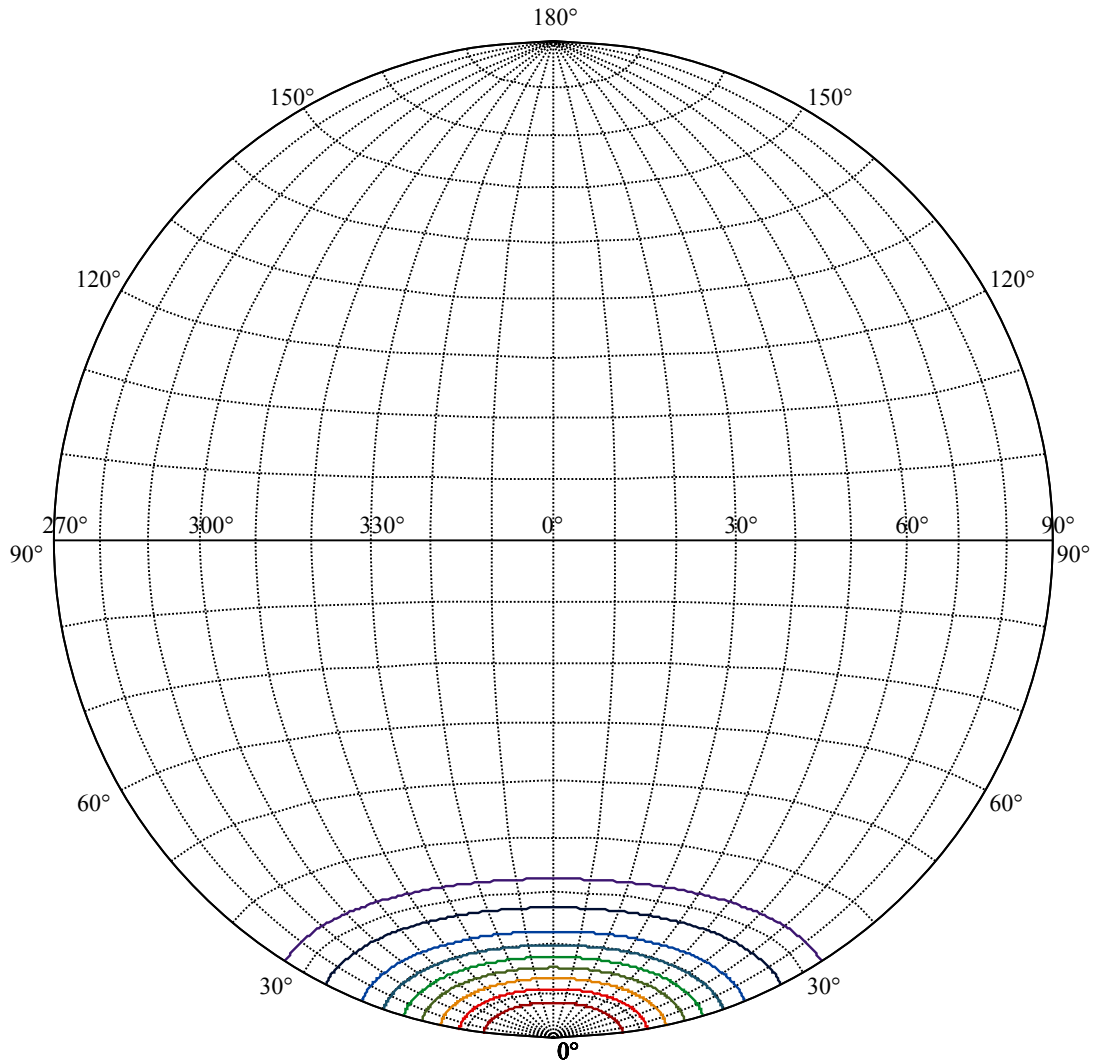
Beam Angle(50%Imax):C0/180Left:17.5 Right:17.5

:C90/270Left:17.5 Right:17.5





(10%Imax) 473.116	—
(20%Imax) 946.233	—
(30%Imax) 1419.35	—
(40%Imax) 1892.47	—
(50%Imax) 2365.58	—
(60%Imax) 2838.7	—
(70%Imax) 3311.81	—
(80%Imax) 3784.93	—
(90%Imax) 4258.05	—



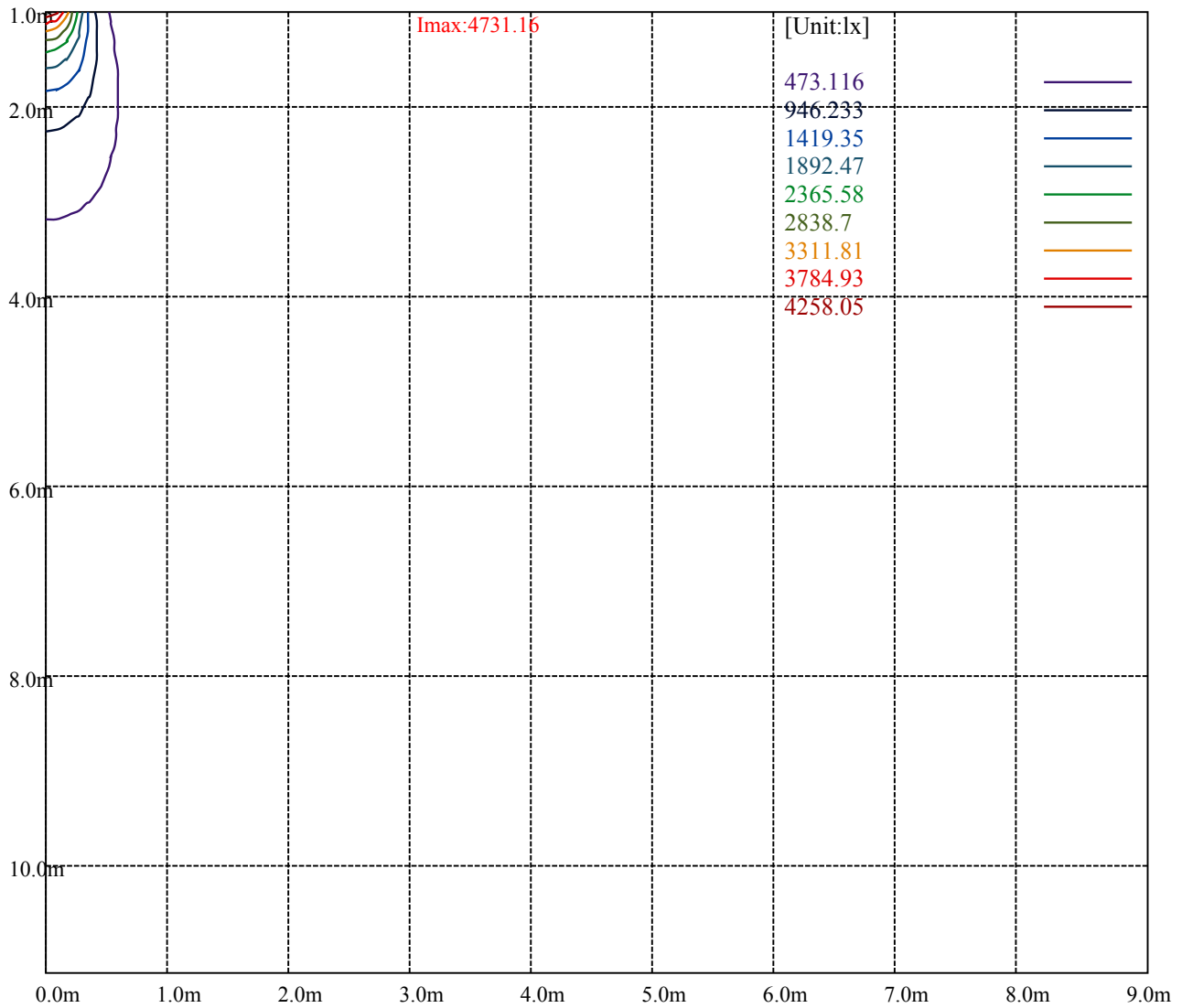
House

[Unit:cd]

Road

Imax:4731.16

(10%Imax) 473.116	—
(20%Imax) 946.233	—
(30%Imax) 1419.35	—
(40%Imax) 1892.47	—
(50%Imax) 2365.58	—
(60%Imax) 2838.7	—
(70%Imax) 3311.81	—
(80%Imax) 3784.93	—
(90%Imax) 4258.05	—



Luminance Table

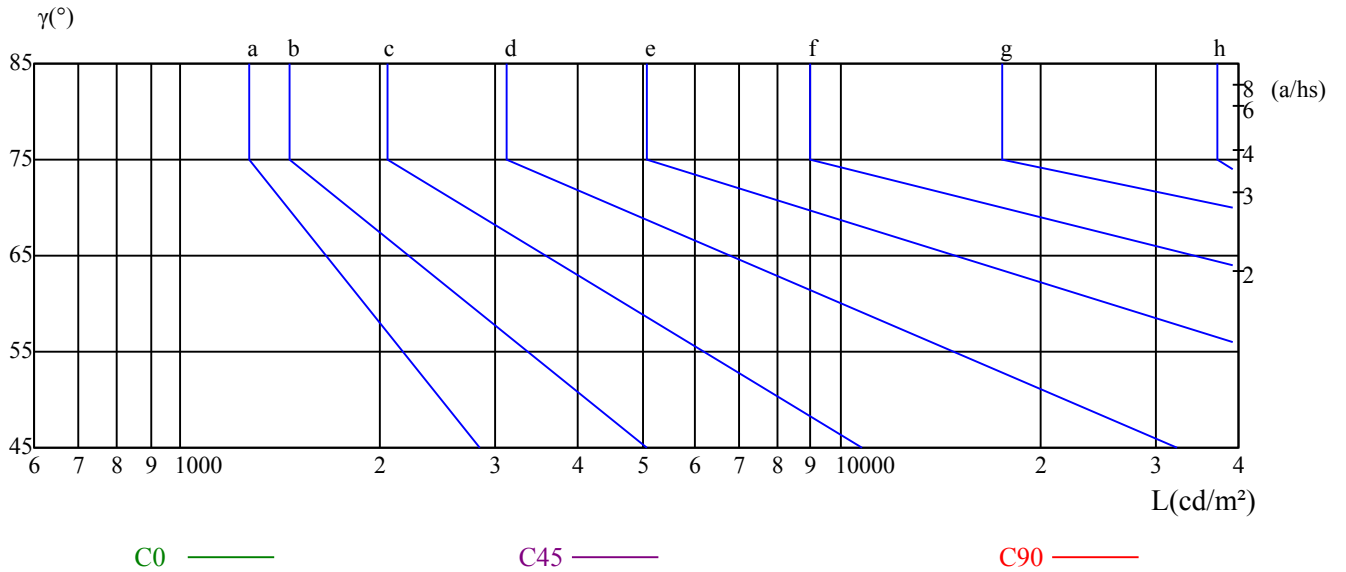
γ	45	50	55	60	65	70	75	80	85
C0	0	0	0	0	0	0	0	0	0
C45	0	0	0	0	0	0	0	0	0
C90	0	0	0	0	0	0	0	0	0

L(Hor)(65)	L(Ver)(65)	L45(65)	L(Hor)(75)	L(Ver)(75)	L45(75)	L(Hor)(85)	L(Ver)(85)	L45(85)
0	0	0	0	0	0	0	0	0

Glare Table

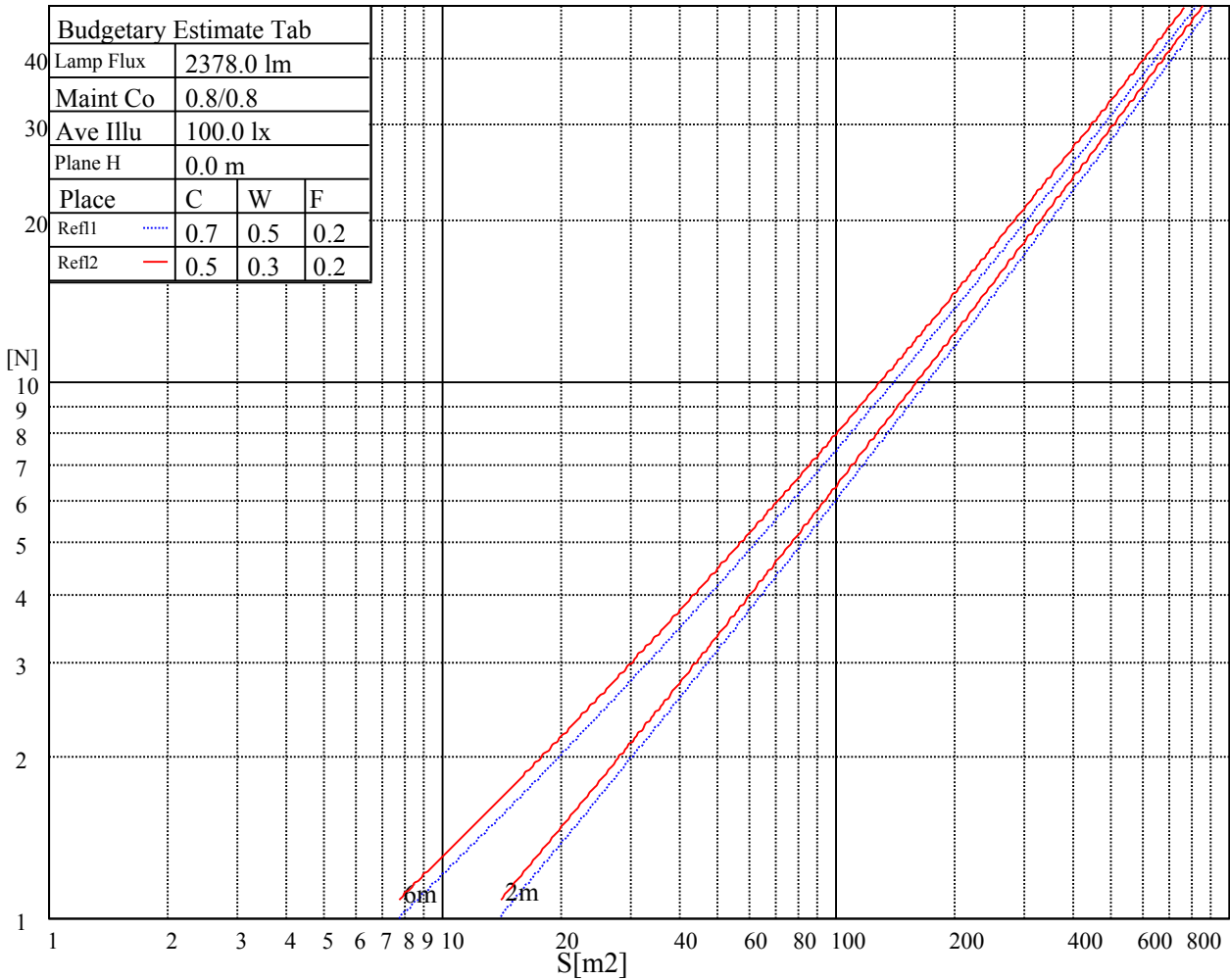
Glare	Quality	Service Values Illuminance(lx)							
1.15	A	2000	1000	500	<=300				
1.5	B		2000	1000	500	<=300			
1.85	C			2000	1000	500	<=300		
2.2	D				2000	1000	500	<=300	
2.55	E					2000	1000	500	<=300
		a	b	c	d	e	f	g	h

Luminance Limiting Curve

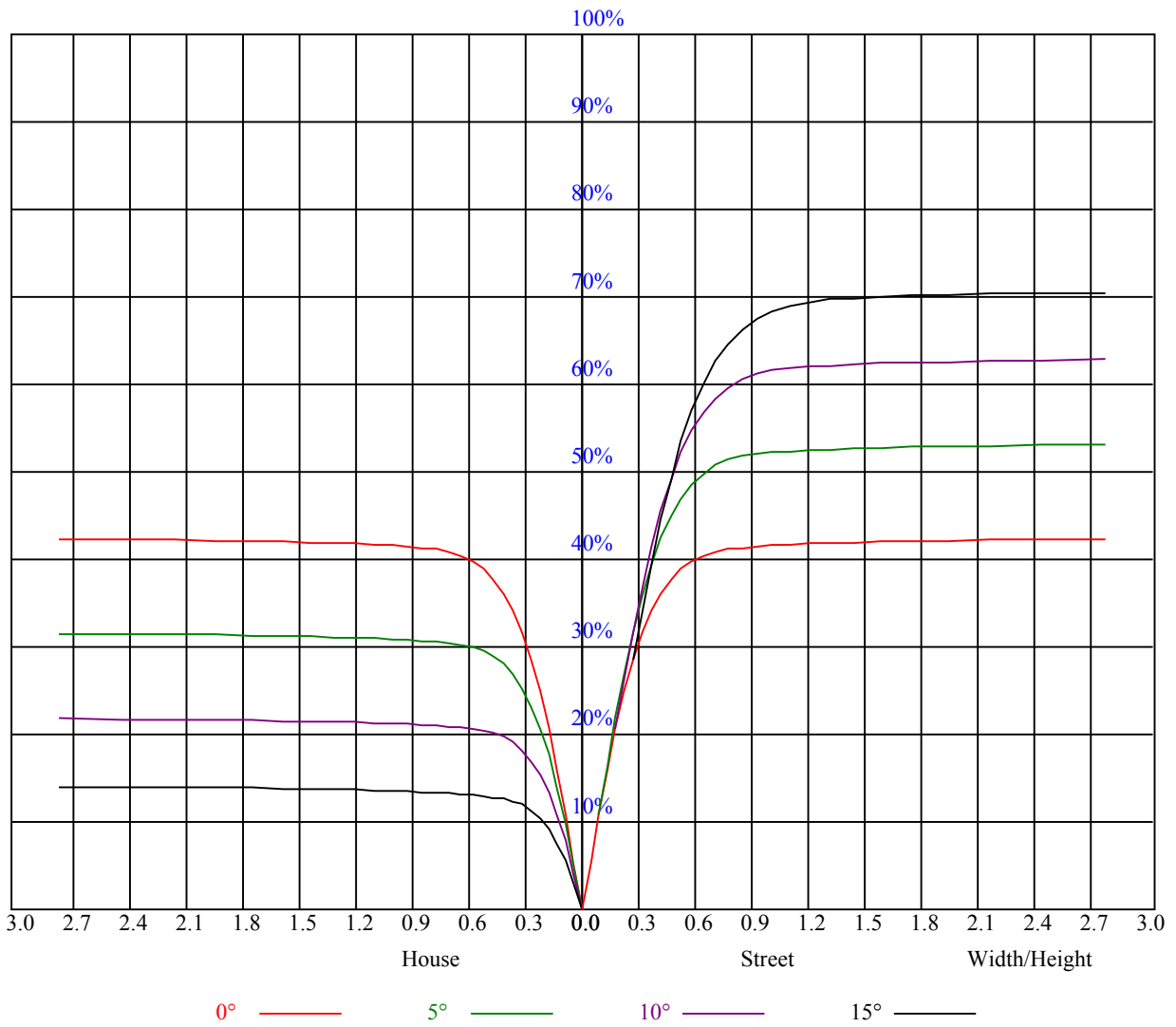


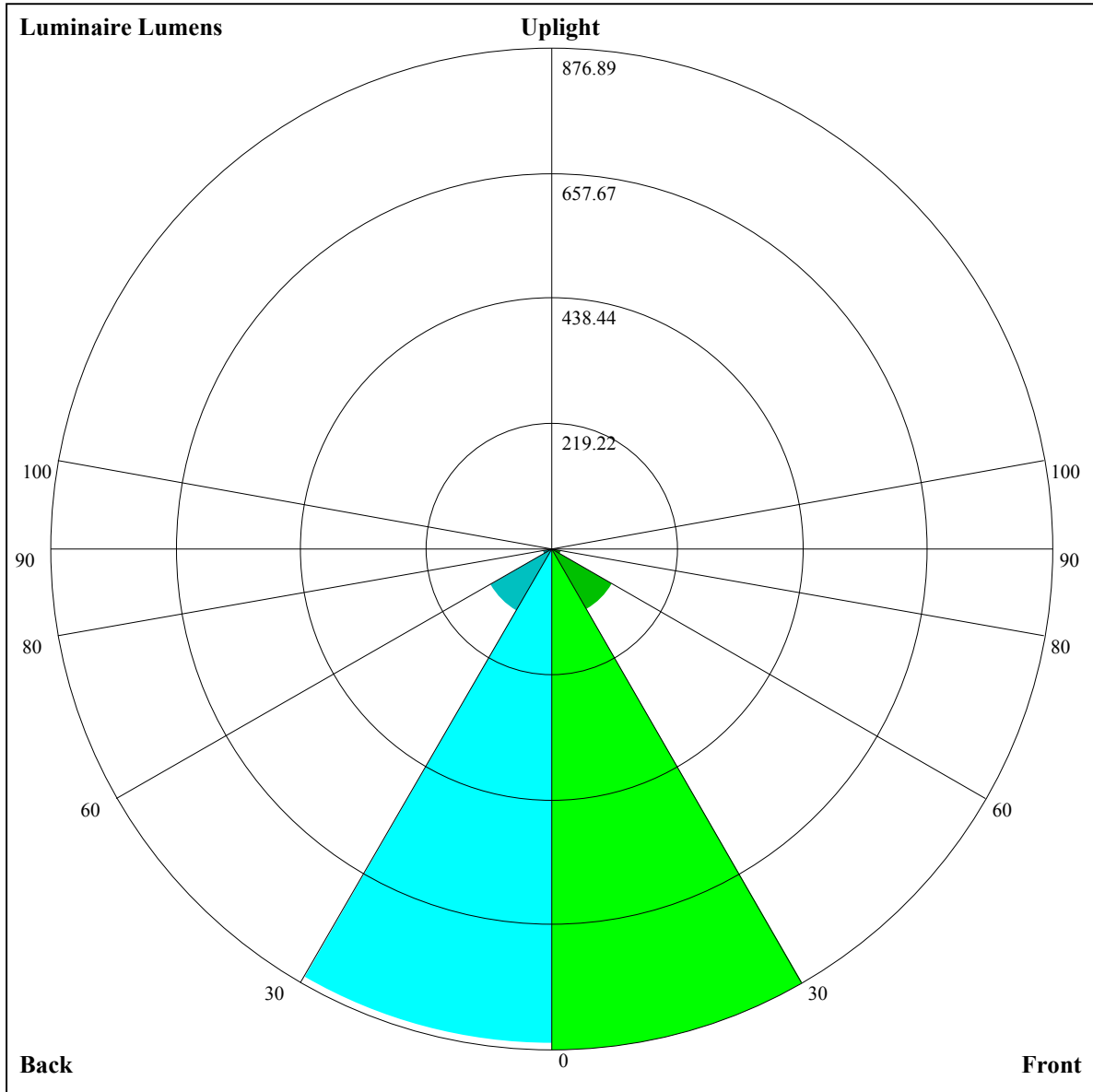
Illumination assessment according UGR											
Rf of Ceiling	70	70	50	50	30	70	70	50	50	30	
Rf of Wall	50	30	50	30	30	50	30	50	30	30	
Rf of Floor	20	20	20	20	20	20	20	20	20	20	
Room dimensions		Viewed crosswise					Viewed endwise				
X	Y										
2H	2H	非数字	非数字	非数字	非数字	非数字	非数字	非数字	非数字	非数字	
	3H	非数字	非数字	非数字	非数字	非数字	非数字	非数字	非数字	非数字	
	4H	非数字	非数字	非数字	非数字	非数字	非数字	非数字	非数字	非数字	
	6H	非数字	非数字	非数字	非数字	非数字	非数字	非数字	非数字	非数字	
	8H	非数字	非数字	非数字	非数字	非数字	非数字	非数字	非数字	非数字	
	12H	非数字	非数字	非数字	非数字	非数字	非数字	非数字	非数字	非数字	
4H	2H	非数字	非数字	非数字	非数字	非数字	非数字	非数字	非数字	非数字	
	3H	非数字	非数字	非数字	非数字	非数字	非数字	非数字	非数字	非数字	
	4H	非数字	非数字	非数字	非数字	非数字	非数字	非数字	非数字	非数字	
	6H	非数字	非数字	非数字	非数字	非数字	非数字	非数字	非数字	非数字	
	8H	非数字	非数字	非数字	非数字	非数字	非数字	非数字	非数字	非数字	
8H	12H	非数字	非数字	非数字	非数字	非数字	非数字	非数字	非数字	非数字	
	4H	非数字	非数字	非数字	非数字	非数字	非数字	非数字	非数字	非数字	
	6H	非数字	非数字	非数字	非数字	非数字	非数字	非数字	非数字	非数字	
	8H	非数字	非数字	非数字	非数字	非数字	非数字	非数字	非数字	非数字	
12H	12H	非数字	非数字	非数字	非数字	非数字	非数字	非数字	非数字	非数字	
	4H	非数字	非数字	非数字	非数字	非数字	非数字	非数字	非数字	非数字	
	6H	非数字	非数字	非数字	非数字	非数字	非数字	非数字	非数字	非数字	
	8H	非数字	非数字	非数字	非数字	非数字	非数字	非数字	非数字	非数字	
Variation with the observer position at spacings:											
S = 1.0H		非数字/非数字					非数字/非数字				
S = 1.5H		非数字/非数字					非数字/非数字				
S = 2.0H		非数字/非数字					非数字/非数字				
Standard tables:		BK0					BK0				
Uncorrected UGR		负无穷大					负无穷大				

UGR calculation is based on CIE Publ. 117 ,S/H = 0.25



RHOCC	80			70			50			30			10			0
RHOW	50	30	10	50	30	10	50	30	10	50	30	10	50	30	10	0
RCR	COEFFICIENTS OF UTILIZATION RHOF=20 CU															
0	1.02	1.02	1.02	0.99	0.99	0.99	0.95	0.95	0.95	0.91	0.91	0.91	0.87	0.87	0.87	0.85
1	0.95	0.93	0.91	0.93	0.91	0.90	0.90	0.88	0.87	0.87	0.85	0.84	0.84	0.83	0.82	0.80
2	0.89	0.86	0.84	0.88	0.85	0.83	0.85	0.83	0.81	0.83	0.81	0.79	0.80	0.79	0.77	0.76
3	0.84	0.81	0.78	0.83	0.80	0.77	0.81	0.78	0.76	0.79	0.77	0.75	0.77	0.75	0.73	0.72
4	0.80	0.76	0.73	0.79	0.75	0.72	0.77	0.74	0.71	0.76	0.73	0.71	0.74	0.72	0.70	0.69
5	0.76	0.72	0.68	0.75	0.71	0.68	0.74	0.70	0.68	0.72	0.69	0.67	0.71	0.69	0.66	0.65
6	0.72	0.68	0.65	0.72	0.68	0.65	0.71	0.67	0.64	0.69	0.66	0.64	0.68	0.66	0.63	0.62
7	0.69	0.65	0.62	0.69	0.64	0.62	0.68	0.64	0.61	0.67	0.63	0.61	0.66	0.63	0.61	0.60
8	0.66	0.62	0.59	0.66	0.62	0.59	0.65	0.61	0.59	0.64	0.61	0.58	0.63	0.60	0.58	0.57
9	0.63	0.59	0.56	0.63	0.59	0.56	0.62	0.59	0.56	0.62	0.58	0.56	0.61	0.58	0.56	0.55
10	0.61	0.57	0.54	0.61	0.57	0.54	0.60	0.56	0.54	0.59	0.56	0.54	0.59	0.56	0.53	0.53





Luminaire Lumens:

FL=876.89,FM=123.24,FH=15.84,FVH=5.25

BL=865.17,BM=124.17,BH=15.61,BVH=5.21

UL=0,UH=0

BUG Rating:B2-U0-G0

Intensity data(cd)

C/γ(°)	0.0	1.0	2.0	3.0	4.0	5.0	6.0	7.0	8.0
0.0	4742.14	4735.11	4708.78	4678.35	4628.02	4570.08	4502.78	4398.02	4296.20
45.0	4722.24	4735.70	4740.97	4728.09	4698.83	4643.23	4589.98	4532.04	4453.04
90.0	4730.43	4735.70	4706.44	4666.06	4611.63	4555.45	4485.81	4387.49	4280.39
135.0	4729.85	4732.19	4719.90	4689.47	4635.63	4578.86	4497.51	4426.70	4340.09
180.0	4742.14	4724.58	4692.39	4649.09	4595.25	4522.68	4451.87	4360.57	4234.16
225.0	4722.24	4684.20	4621.58	4570.08	4490.49	4420.26	4327.21	4217.78	4045.13
270.0	4730.43	4722.82	4686.54	4639.14	4598.17	4535.55	4470.59	4369.35	4255.23
315.0	4729.85	4698.24	4669.57	4626.85	4578.86	4499.27	4422.02	4320.19	4185.59
360.0	4742.14	4735.11	4708.78	4678.35	4628.02	4570.08	4502.78	4398.02	4296.20
C/γ(°)	9.0	10.0	11.0	12.0	13.0	14.0	15.0	16.0	17.0
0.0	4127.65	3966.13	3790.56	3594.51	3334.67	3125.16	2911.55	2703.21	2448.05
45.0	4322.53	4189.10	4042.79	3876.00	3647.77	3443.52	3174.32	2965.39	2754.71
90.0	4150.47	3954.42	3769.49	3583.98	3385.59	3135.11	2930.28	2721.94	2520.62
135.0	4209.00	4074.39	3912.87	3736.13	3499.70	3298.97	3104.09	2854.20	2649.96
180.0	4106.58	3961.45	3741.99	3550.03	3296.63	3092.39	2891.66	2685.07	2436.35
225.0	3878.34	3695.17	3504.39	3246.89	3035.04	2830.21	2626.55	2376.66	2188.21
270.0	4129.99	3977.25	3756.62	3569.35	3310.09	3098.82	2888.14	2629.47	2421.13
315.0	4005.34	3830.36	3591.00	3393.19	3183.10	2917.99	2714.33	2519.45	2316.96
360.0	4127.65	3966.13	3790.56	3594.51	3334.67	3125.16	2911.55	2703.21	2448.05
C/γ(°)	18.0	19.0	20.0	21.0	22.0	23.0	24.0	25.0	26.0
0.0	2254.93	2062.98	1837.67	1673.80	1527.50	1165.59	1165.59	1138.79	1018.41
45.0	2506.58	2309.36	2120.33	1941.25	1735.84	1586.60	1449.08	1327.93	1189.82
90.0	2284.19	2093.41	1874.53	1716.52	1564.36	1398.16	1147.74	1147.74	1076.35
135.0	2445.71	2254.35	2024.94	1855.81	1694.28	1516.38	1388.21	1244.83	1142.42
180.0	2236.79	2051.86	1875.12	1676.73	1535.10	1408.11	1265.31	1161.73	1068.09
225.0	1951.78	1784.99	1628.74	1457.85	1148.56	1148.56	1123.34	1030.58	921.38
270.0	2218.65	2035.47	1817.77	1658.59	1505.84	1375.92	1231.96	1127.20	1030.64
315.0	2071.76	1895.60	1723.55	1573.73	1405.18	1144.41	1144.41	1066.69	950.58
360.0	2254.93	2062.98	1837.67	1673.80	1527.50	1165.59	1165.59	1138.79	1018.41
C/γ(°)	27.0	28.0	29.0	30.0	31.0	32.0	33.0	34.0	35.0
0.0	933.43	859.75	796.32	701.33	612.26	508.62	404.98	278.33	193.12
45.0	1089.75	998.45	896.62	828.15	769.63	657.27	560.70	440.73	346.51
90.0	965.33	886.67	818.32	750.49	643.86	548.77	454.37	363.31	256.33
135.0	1046.44	961.00	869.70	808.25	746.81	659.02	539.05	443.07	349.44
180.0	961.00	880.82	814.11	735.69	650.83	564.22	459.46	334.22	311.40
225.0	847.17	765.12	684.54	586.98	466.83	374.95	284.77	203.01	121.43
270.0	924.71	854.49	790.70	682.43	589.38	491.65	378.11	312.57	312.57
315.0	874.85	797.95	716.61	620.16	500.43	406.61	315.61	229.82	138.17
360.0	933.43	859.75	796.32	701.33	612.26	508.62	404.98	278.33	193.12
C/γ(°)	36.0	37.0	38.0	39.0	40.0	41.0	42.0	43.0	44.0
0.0	130.04	89.19	80.41	73.45	66.66	61.74	57.64	53.20	49.86
45.0	299.11	299.11	98.67	81.93	74.97	68.76	62.38	57.82	54.02
90.0	175.57	113.01	81.11	73.74	66.01	60.98	56.53	52.85	48.69
135.0	302.62	302.62	98.61	78.83	70.40	64.73	58.76	54.78	51.27
180.0	311.40	103.53	77.89	71.63	65.72	59.81	55.54	52.09	48.05
225.0	89.19	79.18	72.63	65.55	60.45	56.30	52.73	48.63	45.94
270.0	133.14	87.26	79.24	72.80	66.01	60.92	56.94	53.37	49.39
315.0	97.21	84.27	77.66	70.17	64.96	60.22	55.42	51.91	48.81
360.0	130.04	89.19	80.41	73.45	66.66	61.74	57.64	53.20	49.86

Intensity data(cd)

C/γ(°)	45.0	46.0	47.0	48.0	49.0	50.0	51.0	52.0	53.0
0.0	47.11	44.42	41.49	39.56	37.81	35.70	34.41	33.01	31.84
45.0	50.56	46.88	44.24	41.90	39.15	37.34	35.64	33.71	32.42
90.0	45.88	43.37	41.08	38.57	36.87	35.29	33.77	32.13	30.96
135.0	48.16	44.83	42.31	40.15	38.22	36.05	34.41	33.07	31.54
180.0	45.30	42.84	40.15	38.39	36.75	35.11	33.36	32.07	30.90
225.0	43.01	40.85	39.03	36.93	35.35	33.94	32.54	30.96	29.61
270.0	46.70	44.24	41.61	39.62	37.98	35.99	34.53	33.12	31.54
315.0	45.53	43.13	40.56	38.68	36.99	35.46	33.65	32.30	31.08
360.0	47.11	44.42	41.49	39.56	37.81	35.70	34.41	33.01	31.84
C/γ(°)	54.0	55.0	56.0	57.0	58.0	59.0	60.0	61.0	62.0
0.0	30.31	29.20	27.68	26.57	25.40	23.99	22.94	21.89	20.95
45.0	31.19	30.08	28.68	27.62	26.51	25.16	24.11	23.00	22.00
90.0	29.50	28.32	27.39	25.98	24.93	23.82	22.53	21.59	20.66
135.0	30.37	29.32	27.97	26.86	25.81	24.52	23.47	22.41	21.24
180.0	29.73	28.21	27.15	25.98	24.70	23.70	22.36	21.42	20.48
225.0	28.56	27.39	25.93	24.93	23.76	22.53	21.54	20.42	19.55
270.0	30.14	29.09	27.86	26.39	25.28	24.17	23.17	21.83	20.95
315.0	29.73	28.38	27.15	26.04	24.93	23.58	22.53	21.24	20.37
360.0	30.31	29.20	27.68	26.57	25.40	23.99	22.94	21.89	20.95
C/γ(°)	63.0	64.0	65.0	66.0	67.0	68.0	69.0	70.0	71.0
0.0	20.13	19.02	18.32	17.62	16.80	16.15	15.57	14.92	14.40
45.0	20.72	19.84	19.02	18.08	17.44	16.56	16.04	15.45	14.81
90.0	19.78	18.73	18.02	17.38	16.50	15.98	15.39	14.69	14.28
135.0	20.37	19.55	18.67	17.85	17.21	16.56	15.98	15.22	14.75
180.0	19.49	18.61	17.91	17.21	16.39	15.80	15.22	14.75	14.10
225.0	18.73	18.02	17.03	16.44	15.86	15.22	14.63	14.10	13.64
270.0	19.78	18.96	18.26	17.32	16.68	16.09	15.45	14.86	14.28
315.0	19.43	18.49	17.79	17.09	16.50	15.74	15.16	14.69	14.10
360.0	20.13	19.02	18.32	17.62	16.80	16.15	15.57	14.92	14.40
C/γ(°)	72.0	73.0	74.0	75.0	76.0	77.0	78.0	79.0	80.0
0.0	13.87	13.28	12.87	12.47	12.00	11.70	11.41	11.00	10.77
45.0	14.28	13.75	13.28	12.87	12.35	12.00	11.65	11.35	11.12
90.0	13.75	13.17	12.82	12.35	12.06	11.65	11.35	11.12	10.83
135.0	14.10	13.64	13.23	12.70	12.35	12.00	11.70	11.35	11.00
180.0	13.58	13.11	12.64	12.23	11.94	11.53	11.24	10.94	10.65
225.0	13.05	12.58	12.29	11.82	11.47	11.18	10.89	10.65	10.42
270.0	13.75	13.34	12.76	12.35	12.06	11.70	11.35	11.06	10.71
315.0	13.58	13.11	12.70	12.23	11.88	11.53	11.12	10.83	10.59
360.0	13.87	13.28	12.87	12.47	12.00	11.70	11.41	11.00	10.77
C/γ(°)	81.0	82.0	83.0	84.0	85.0	86.0	87.0	88.0	89.0
0.0	10.53	10.24	10.01	9.77	9.60	9.42	9.19	9.01	8.78
45.0	10.83	10.53	10.12	9.95	9.71	9.48	9.31	9.13	8.95
90.0	10.53	10.18	10.01	9.71	9.54	9.36	9.19	9.01	8.84
135.0	10.77	10.42	10.12	9.83	9.66	9.42	9.31	9.07	8.90
180.0	10.42	10.12	9.89	9.66	9.42	9.25	9.07	8.90	8.72
225.0	10.07	9.89	9.71	9.48	9.25	9.07	8.84	8.66	8.72
270.0	10.48	10.12	9.89	9.71	9.54	9.25	9.01	8.90	8.72
315.0	10.24	10.01	9.83	9.66	9.54	9.19	8.95	8.90	8.72
360.0	10.53	10.24	10.01	9.77	9.60	9.42	9.19	9.01	8.78

Intensity data(cd)

C/γ(°)	90.0
0.0	8.78
45.0	8.72
90.0	8.72
135.0	8.72
180.0	8.72
225.0	8.72
270.0	8.78
315.0	8.84
360.0	8.78